

The Continuum Of Speech Rhythm: Computational Testing Of Speech Rhythm Of Large Corpora From Natural Chinese And English Speech

Additional Figures

Figure 1: Averages of speakers by language, gender and genre. CH–Chinese, EN–English, F–Female, M–Male, Rep–Reporter, Conv–Conversational, Inv–Interviewee. NOTE: The EN Interviewees are not plotted for clarity (values M: 63.7_{rPVI}×59.6_{nPVI}, F: 63.5_{rPVI}×64.8_{nPVI}).

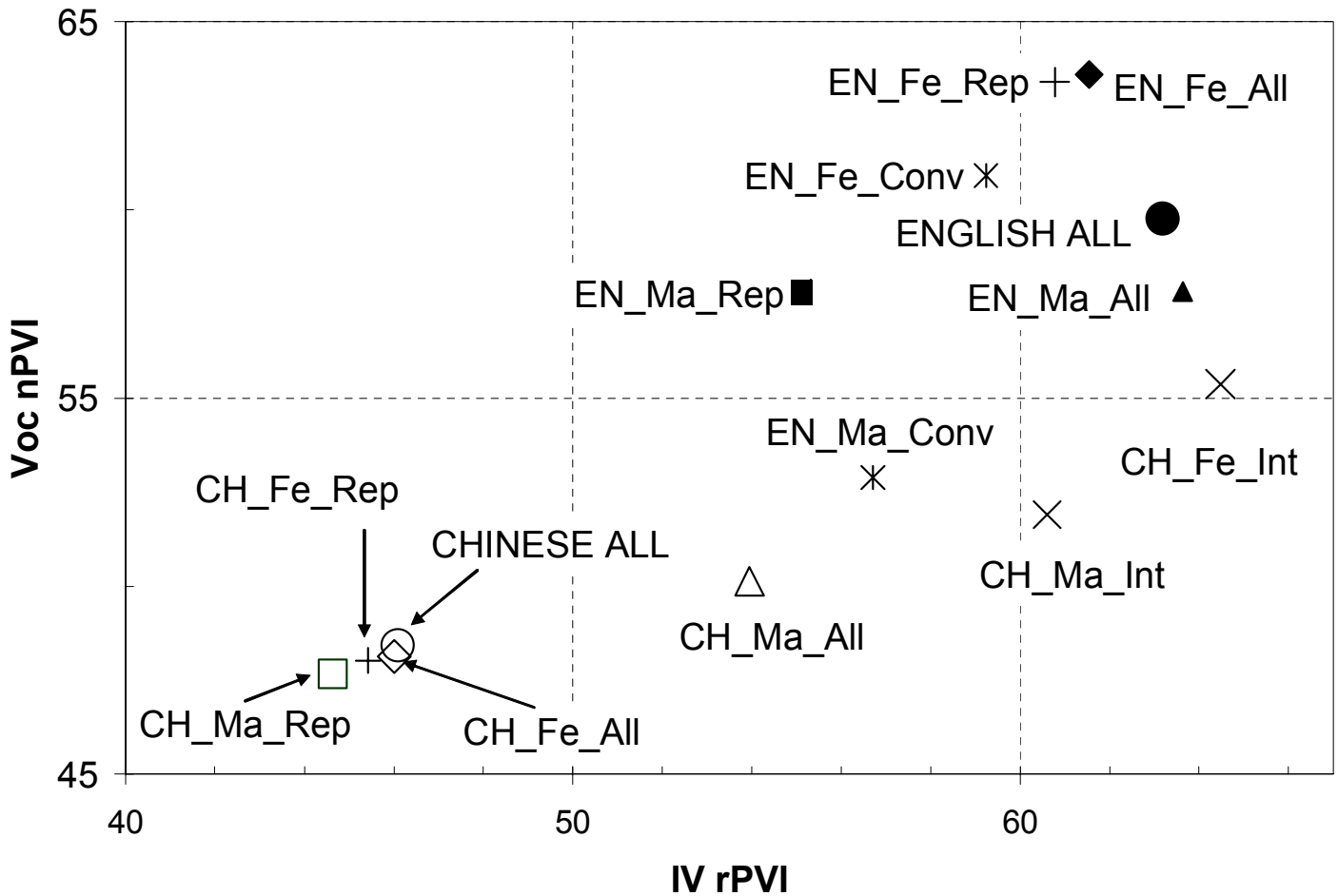


Figure 2: Speaker diversity between EN and CH (circles are English speakers and boxes are Chinese speakers).

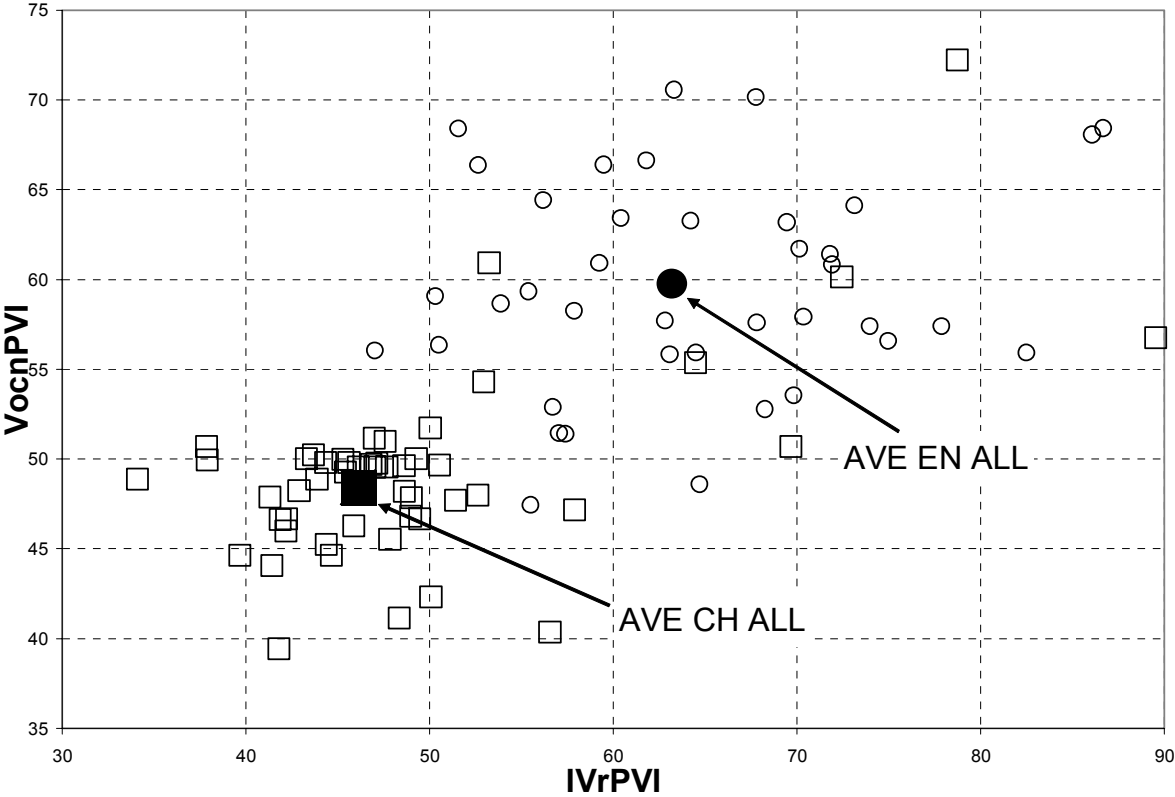


Figure 2: Color

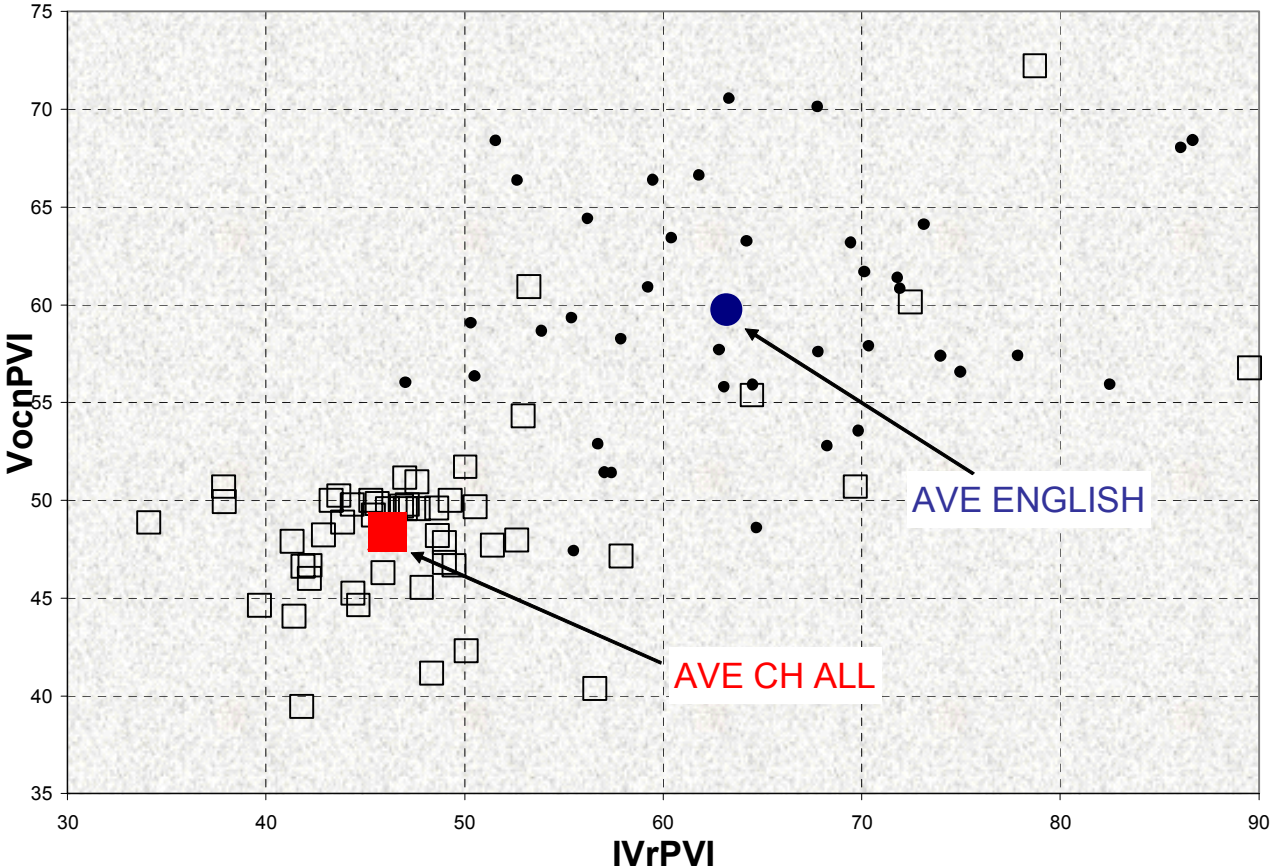


Figure 3: Continuum of speakers by language, gender and genre are shown by overlapping layers representing the boundaries of each group. E–English, C–Chinese, F–Female, M–Male, REP–Reporter, INT–Interviewee. NOTE: only one sample of C_F_INT (64.5_{rPVI}×55.4_{nPVI}).

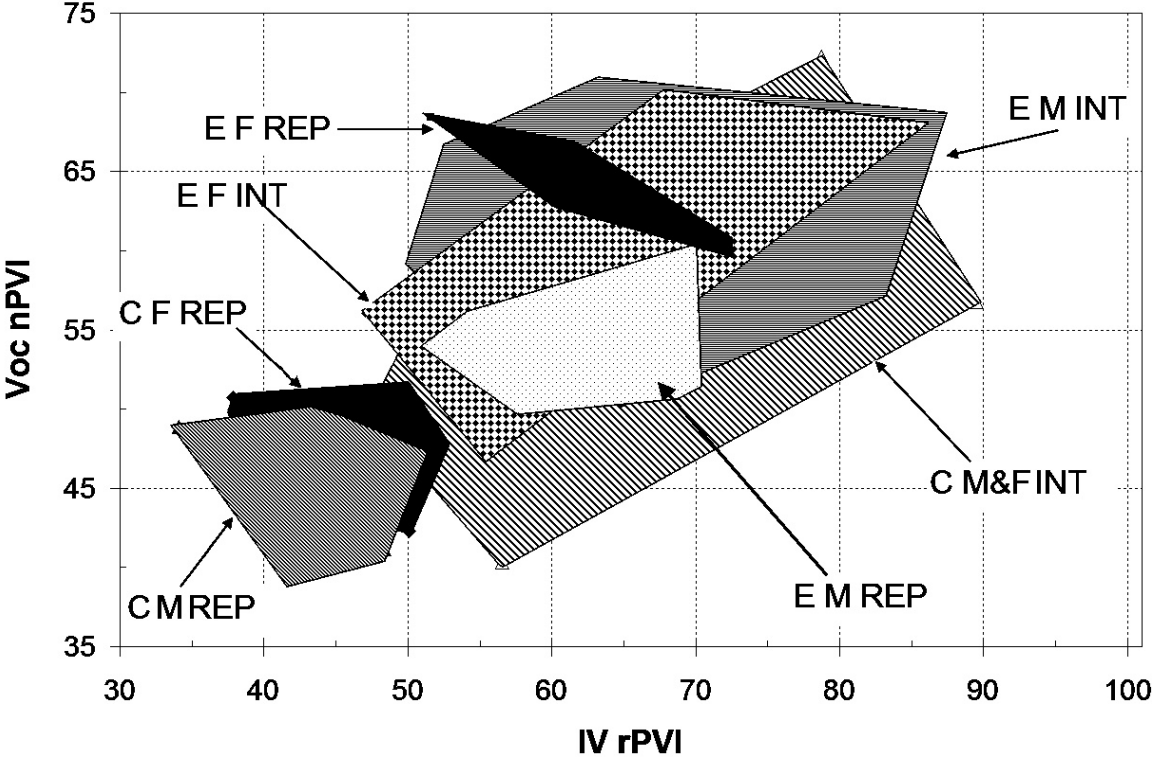
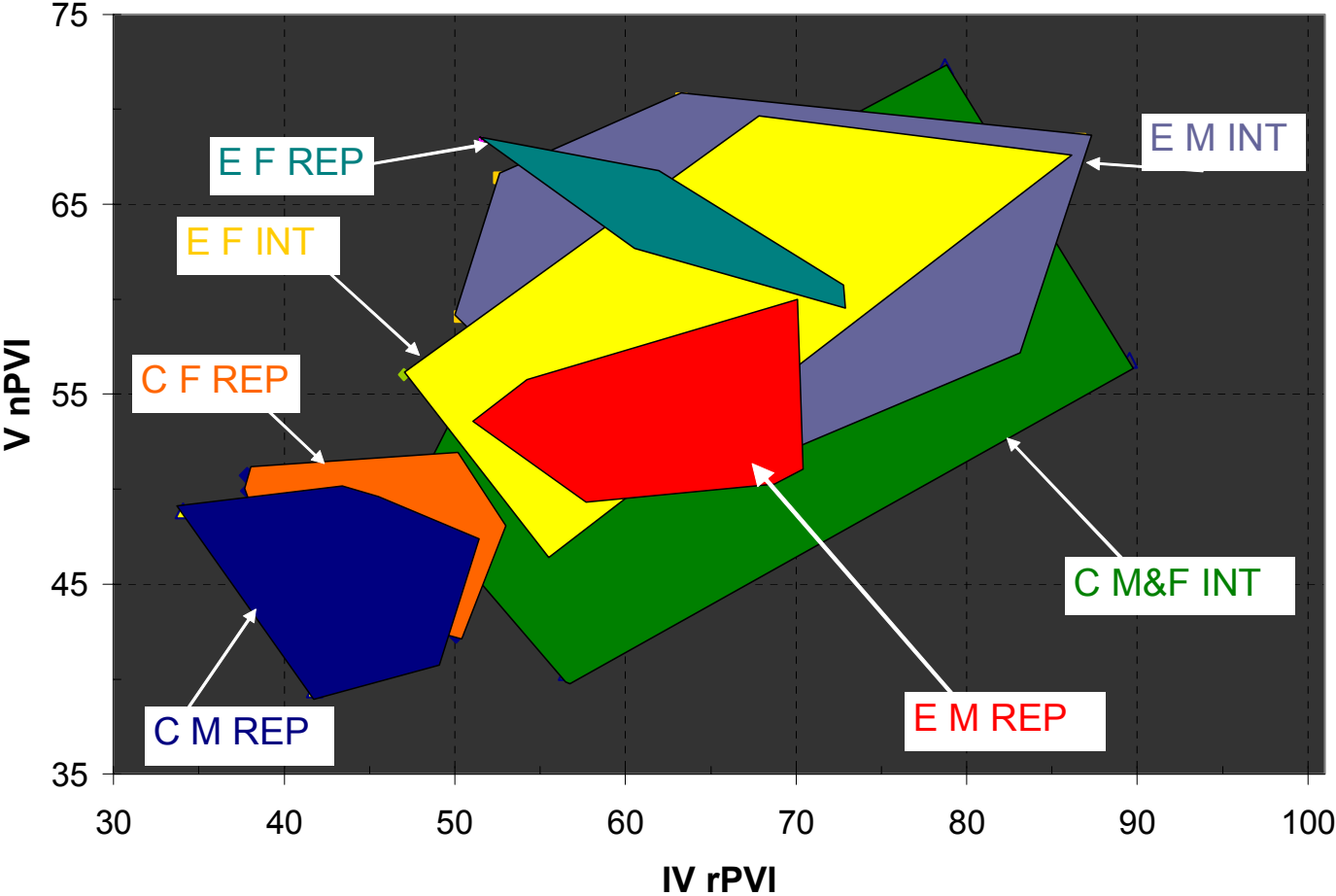
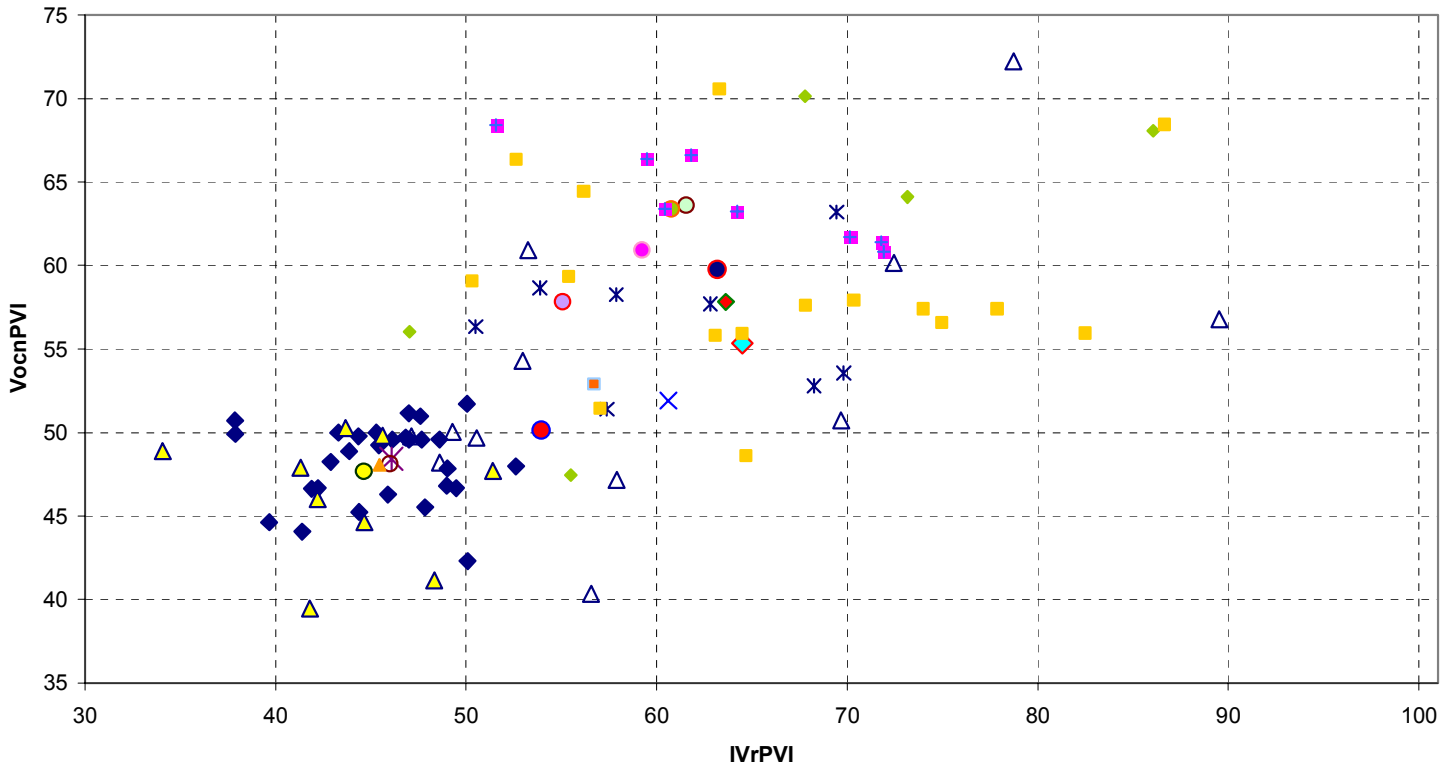


Figure 3: Color



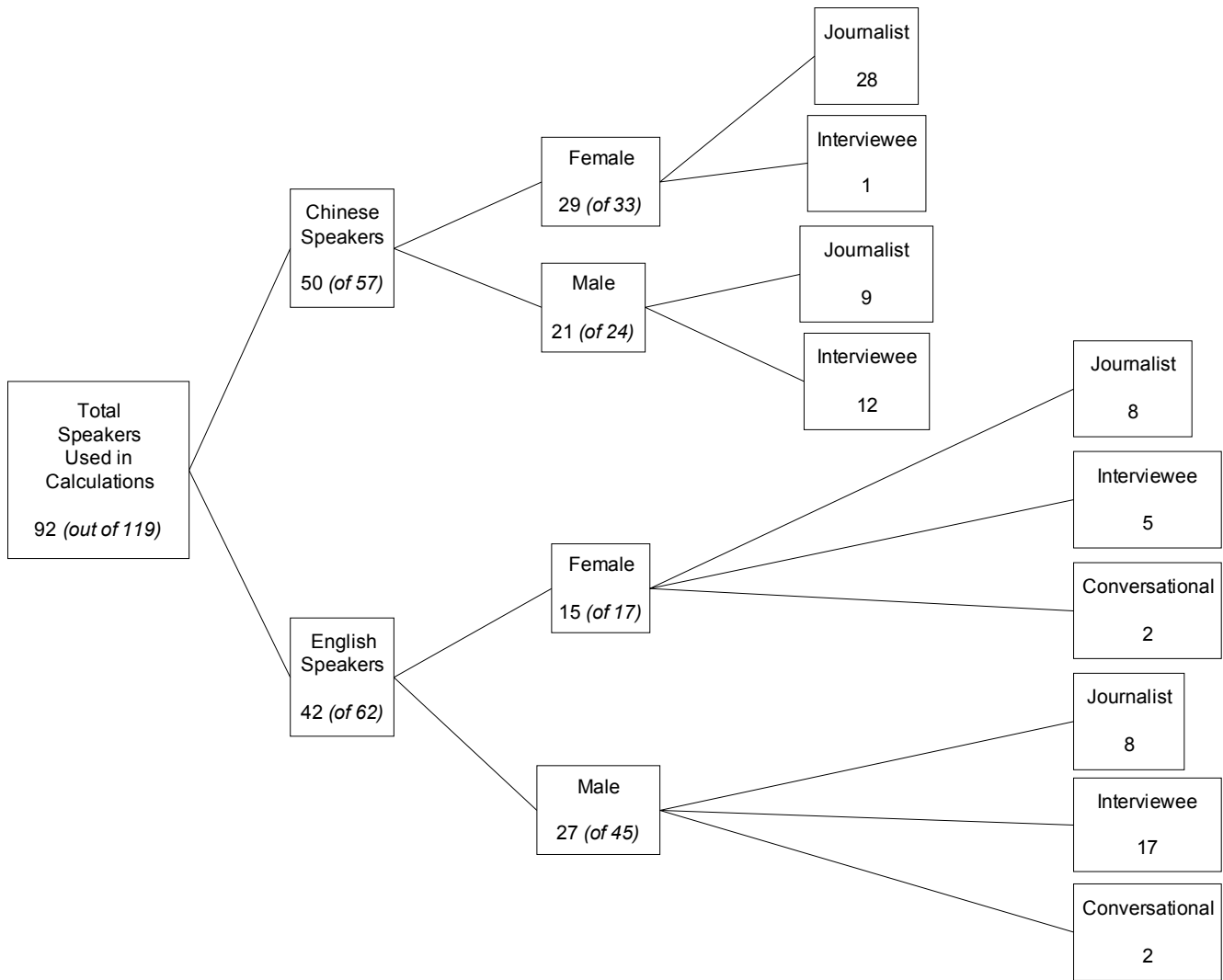
Plot of all speakers (split by gender, genre, language)

CHINESE / ENGLISH



◆ CH FE REP	△ CH M REP	△ CH M INT	◇ CH F INT	✱ AVE CH ALL	○ AVE CH F	● AVE CH M
✱ CH AVE INT M	● CH AVE REP M	△ CH AVE REP F	● AVE EN ALL	○ AVE F EN	◇ AVE M EN	■ EN M CONV
● EN F CONV	○ EN AVE REP M	● EN AVE REP F	■ EN FE REP	✱ EN M REP	◇ EN F INT	■ EN M INT

Breakdown of Speaker Divisions



Matthew Benton
Liz Dockendorf
Wenhua Jin
Yang Liu
Jerold A. Edmondson

matt@mjbenton.com
liz1695@yahoo.com
jinwenh@hotmail.com
yangl@hlt.utdallas.edu
j.edmondson@sbcglobal.net